

Low PIM Termination Load

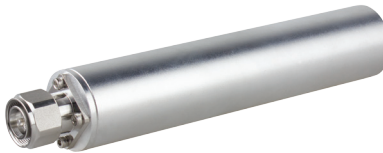
N , 4.3-10, and 7-16 DIN Connectors

- Low PIM
- $\leq -155\text{dBc}$
- 50 Ohm impedance
- Low VSWR
- Multiple configurations
- RoHS compliant



N Male

RFLOAD-NM50	Avg. Power: 50 watts	Freq: DC-3 GHz
-------------	----------------------	----------------



4.3-10 Male

RFLOAD-43M2	Avg. Power: 2 watts	Freq: DC-3 GHz
-------------	---------------------	----------------



7-16 DIN Male

RFLOAD-DM50	Avg. Power: 50 watts	Freq: DC-3 GHz
-------------	----------------------	----------------

Termination Load

N , 4.3-10, and 7-16 DIN Connectors

- 50 Ohm impedance
- Low VSWR
- Multiple configurations
- RoHS compliant



N Male

RFDL-30W-NM	Avg. Power: 30 watts	Freq: DC-3 GHz
-------------	----------------------	----------------



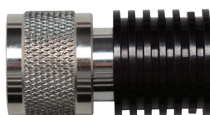
7-16 DIN Female

RFLOAD-DF-50	Avg. Power: 50 watts	Freq: DC-3 GHz
--------------	----------------------	----------------

Termination Load Frequency DC-6 GHz

N , 4.3-10, and 7-16 DIN Connectors

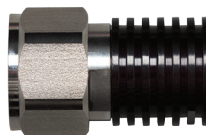
- Low VSWR: ≤ 1.08 at 3GHz, ≤ 1.20 at 6GHz
- 50 Ohm impedance
- Frequency DC-6GHz
- Multiple configurations
- RoHS compliant
- IP65



RFDL-2W-NM

N Male

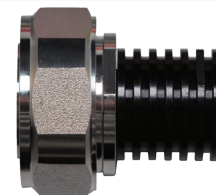
Average Power: 2 watts	Frequency: DC-6 GHz
------------------------	---------------------



RFDL-2W-43M

4.3-10 Male

Average Power: 2 watts	Frequency: DC-6 GHz
------------------------	---------------------



RFDL-2W-DM

7-16 DIN Male

Average Power: 2 watts	Frequency: DC-6 GHz
------------------------	---------------------

*Specifications subject to change without notice.